

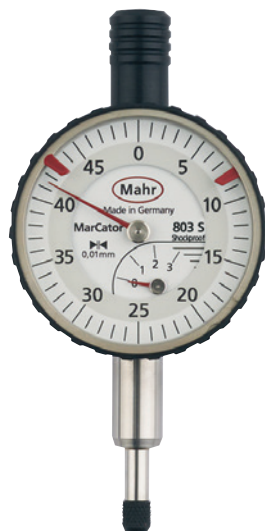
# MarCator 803 S / 803 A / 805 A

## Small Dial Indicators

DIN 878

### FEATURES

- Shockproof movement
- High contrast dial face
- Adjustable tolerance markers
- Chrome plated housing
- Lifter protection cap on the measuring spindle
- Precision gears and pinions
- Package contains: case



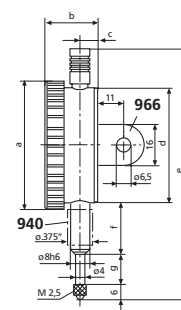
### Application:

To be used on all smaller indicating measuring instruments, or due to a confined space a smaller indicating instrument is required

### TECHNICAL DATA

Order no.		4324000	4324050	4324060
Product type		803 S	803 A	805 A
Measuring span	mm	3		5
Graduation value	mm	0.01		
Type of dial face		0 –50	0 –50	0 –100
Range per rev.	mm	0.5		1
Error limit, measuring range	µm	10		12
Error limit, 1 revolution	µm	9		10
Error limit, 1/2 revolution	µm	8		9
Error limit, 1/10 revolution	µm	5		
Repeatability $f_w$	µm	3		
Hysteresis $f_u$	µm	3		
Overtravel	mm	0.1		
Measuring force incoming measuring pin		0.7 –1.1		
Standard		DIN 878		
Shockproof movement		•		
Lifting protection cap			•	
Dial color		White		

Order no.	a	b	c	d	e	f	g	Mounting shaft	Scale diameter
	mm	mm	mm	mm	mm	mm	mm	mm	mm
4324000	40	20.6	6.8	37	80	15.5	5.5	8	34
4324050	40	20.6	6.8	37	83	15	8	8	34
4324060	40	20.6	6.8	37	83	15	8	8	34



### ACCESSORIES

Order no.	Product name	Product type
4310103	Adapter bush (.375" / 8 mm)	940
4375020	Lug back, vertical, for 803	966
4375021	Lug back, horizontal, for 803	967

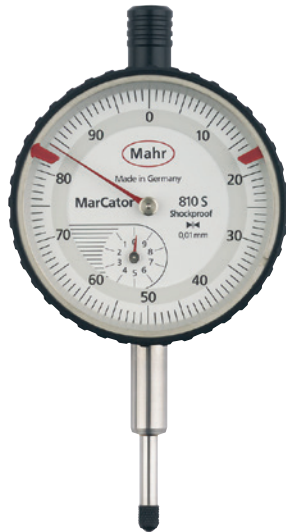
# MarCator 810 S / 810 A / 810 AT / 810 SV / 810 AU

DIN 878

## Dial Indicator

### FEATURES

- Shockproof movement
- High contrast dial face
- Adjustable tolerance markers
- Chrome plated housing
- Lifter protection cap on the measuring spindle
- Precision gears and pinions
- Package contains: case



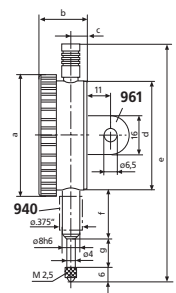
### Application:

The measuring pin is retracted by spring, contacting and the measuring force are triggered manually (by hand) by touching the button on the upper sleeve

### TECHNICAL DATA

Order no.		4311000	4311050	4311060	4321000	4329050
Product type		810 S	810 A	810 AT	810 SV	810 AU
Measuring span	mm		10		40	10
Graduation value	mm			0.01		
Type of dial face		0-100		100-0	0-100	100-0
Range per rev.	mm			1		
Error limit, measuring range	µm		15		25	15
Error limit, 1 revolution	µm		10		15	10
Error limit, 1/2 revolution	µm		9		10	9
Error limit, 1/10 revolution	µm			5		
Repeatability $f_w$	µm		3			5
Hysteresis $f_h$	µm		3		6	5
Overtravel	mm	0.1		0.8		0.1
Measuring force incoming measuring pin			0.7-1.3		0.8-1.8	-
Standard			DIN 878		Factory standard	
Shockproof movement		•			•	
Lifting protection cap				•		
Reverse measuring force direction						•
Dial color				White		

Order no.	a	b	c	d	e	f	g	Mounting shaft	Scale diameter
	mm	mm	mm	mm	mm	mm	mm	mm	mm
4311000	58	23	7.5	52	112	21	16	8	50
4311050	58	23	7.5	52	112	22	15	8	50
4311060	58	23	7.5	52	112	22	15	8	50
4321000	58	24.2	8.7	52	169	22	45	8	50
4329050	58	23	7.5	52	112	22	4.5	8	50



### ACCESSORIES

Order no.	Product name	Product type
4310103	Adapter bush (.375" / 8 mm)	940
4373020	Splash proof cap (58 mm)	955
4375010	Lug back, vertical, for 810	961
4375011	Lug back, horizontal, for 810	962

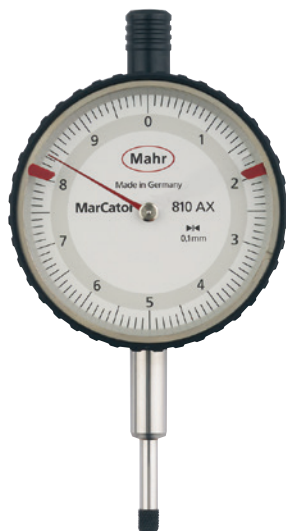


# MarCator 810 AX

## Dial Indicator

### FEATURES

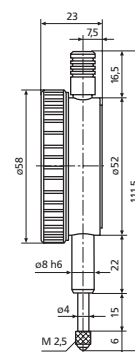
- High contrast dial face
- Adjustable tolerance markers
- Chrome plated housing
- Lifter protection cap on the measuring spindle
- Precision gears and pinions
- Package contains: case



### TECHNICAL DATA

Order no.	4331000	
Product type	810 AX	
Measuring span	mm	10
Graduation value	mm	0.1
Type of dial face	0–10	
Range per rev.	mm	10
Error limit, measuring range	μm	50
Error limit, 1 revolution	μm	50
Error limit, 1/2 revolution	μm	30
Error limit, 1/10 revolution	μm	15
Repeatability $f_w$	μm	15
Hysteresis $f_u$	μm	15
Overtravel	mm	0.5
Measuring force incoming measuring pin	0.7–1.3	
Standard	Factory standard	
Lifting protection cap	•	
Dial color	White	

Order no.	Mounting shaft	Scale diameter
	mm	mm
4331000	8	50



### ACCESSORIES

Order no.	Product name	Product type
4310103	Adapter bush (.375" / 8 mm)	940
4373020	Splash proof cap (58 mm)	955
4375010	Lug back, vertical, for 810	961
4375011	Lug back, horizontal, for 810	962

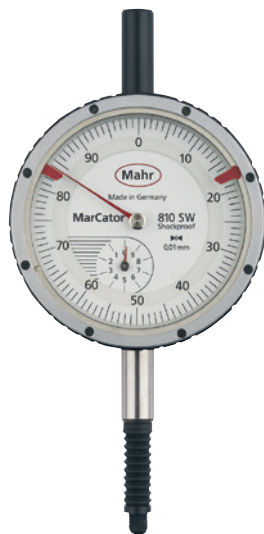
# MarCator 810 SW / 803 SW

Water- and dust-resistant Dial Indicator



## FEATURES

- High contrast dial face
- Adjustable tolerance markers
- Chrome plated housing
- Precision gears and pinions
- Hermetically sealed upper protective measuring spindle cap, bezel and transparent dial cover; sealed with O-rings
- Measuring spindle sealed with rubber sleeve, thus preventing contamination by liquids and impurities
- IP protection category: IP 54
- Package contains: case



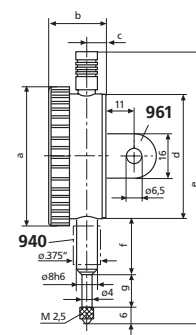
## Application:

At the place of measurement where the dial indicator is exposed to extreme contamination or moisture

## TECHNICAL DATA

Order no.		4315000	4326000
Product type		810 SW	803 SW
Measuring span	mm	10	3
Graduation value	mm		0.01
Type of dial face		0 – 100	0 – 50
Range per rev.	mm	1	0.5
Error limit, measuring range	µm	15	10
Error limit, 1 revolution	µm	10	9
Error limit, 1/2 revolution	µm	9	8
Error limit, 1/10 revolution	µm		5
Repeatability $f_w$	µm		3
Hysteresis $f_u$	µm		3
Overtravel	mm		0.1
Measuring force incoming measuring pin		0.7 – 1.6	0.7 – 1.7
Standard			DIN 878
Shockproof movement			•
Protective measuring spindle cap			•
Dial color			White

Order no.	a	b	c	d	e	f	g	Mounting shaft
	mm	mm	mm	mm	mm	mm	mm	mm
4315000	61	24.2	7.9	52	127.6	22	22.1	8
4326000	44	21.6	7.1	37	86	15	11	8



## ACCESSORIES

Order no.	Product name	Product type
4310103	Adapter bush (.375" / 8 mm)	940
4375010	Lug back, vertical, for 810	961
4375011	Lug back, horizontal, for 810	962
4375020	Lug back, vertical, for 803	966
4375021	Lug back, horizontal, for 803	967

# MarCator 810 SB / 803 SB

## Safety Dial Indicator

DIN 878

### FEATURES

- High contrast dial face
- Adjustable tolerance markers
- Chrome plated housing
- Hermetically sealed protective measuring spindle cap
- Limited measuring range for error free readings
- Large overtravel (ca. 9 mm) for easier insertion of test items in measuring devices
- Precision gears and pinions
- Package contains: case



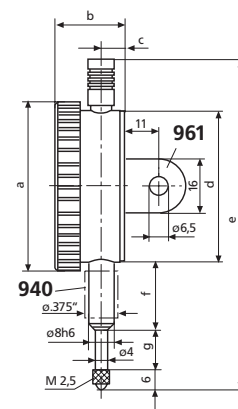
### Application:

For safety reasons, the indication range of these dial indicators is limited to just under one pointer rotation. This prevents the risk of measuring errors arising from possible additional pointer rotations.

### TECHNICAL DATA

Order no.	4317000		4324250	
Product type	810 SB		803 SB	
Measuring span	mm	0.8	0.4	
Graduation value	mm	0.01		
Type of dial face	40 -0 -40		20 -0 -20	
Range per rev.	mm	0.8		
Error limit, measuring range	µm	7		
Error limit, 1/2 revolution	µm	6		
Error limit, 1/10 revolution	µm	5		
Repeatability $f_w$	µm	3		
Hysteresis $f_u$	µm	3		
Overtravel	mm	9		4.5
Measuring force incoming measuring pin	0.9 -1.1		0.7 -1.1	
Standard	DIN 878			
Shockproof movement	•			
Protective measuring spindle cap	•			
Dial color	White			

Order no.	a	b	c	d	e	f	g	Mounting shaft
	mm	mm	mm	mm	mm	mm	mm	mm
4317000	58	23	7.5	52	120	22	15	8
4324250	44	21.6	6.8	37	83	15.5	8	8



### ACCESSORIES

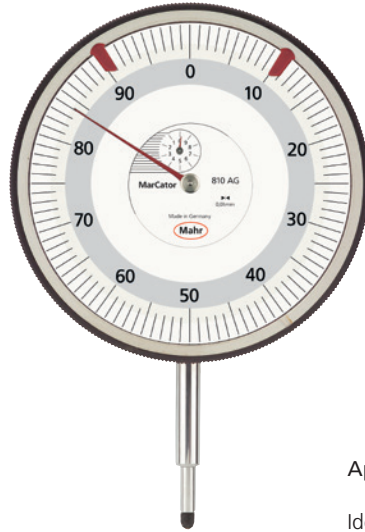
Order no.	Product name	Product type
4310103	Adapter bush (.375" / 8 mm)	940
4375010	Lug back, vertical, for 810	961
4375011	Lug back, horizontal, for 810	962
4375020	Lug back, vertical, for 803	966
4375021	Lug back, horizontal, for 803	967

# MarCator 810 AG

## Large Dial Indicator

### FEATURES

- Large, high contrast dial face
- Adjustable tolerance markers
- Chrome plated housing
- Lifter protection cap on the measuring spindle
- Precision gears and pinions



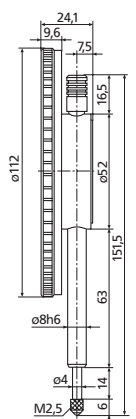
### Application:

Ideal for long reading distance and in poorly lit conditions

### TECHNICAL DATA

Order no.	4322000	
Product type		810 AG
Measuring span	mm	10
Graduation value	mm	0.01
Type of dial face		0 – 100
Range per rev.	mm	1
Error limit, measuring range	µm	17
Error limit, 1 revolution	µm	15
Error limit, 1/2 revolution	µm	10
Error limit, 1/10 revolution	µm	5
Repeatability $f_w$	µm	3
Hysteresis $f_u$	µm	5
Overtravel	mm	0.1
Measuring force incoming measuring pin		1.3 – 2.2
Standard		Factory standard
Lifting protection cap		•
Dial color		White

Order no.	Mounting shaft	Scale diameter
	mm	mm
4322000	8	112



### ACCESSORIES

Order no.	Product name	Product type
4310103	Adapter bush (.375" / 8 mm)	940



## Dial Indicators per ANSI/AGD

### You get more with Mahr Dial Indicators

- Proven for the most demanding applications
- Superior design and serviceability
- Unmatched customer and technical support
- Catalog and customized styles
- Full range of accessories to suit virtually every need
- Unit construction and removable movement save repair/cleaning time and maintenance costs
- Hardened gears and stainless steel racks provide lasting protection against indicator failure due to shock or wear
- Jeweled bearings resist friction, add to longer indicator life
- Skeletonized, hobbled gears for more sensitive response, superior indicator accuracy with minimal hysteresis error
- Soft tinted dials (green - inch / yellow - metric) minimize eye strain
- Special steel alloy, balanced dial hand affords no shift, precise reading
- Controlled rack and pinion mesh eliminate slope for precise response and reading
- Smooth adjusting bezels for easy setup
- Positive pressure pull back spring requires less maintenance
- Compliance with ANSI/AGD dimensional and accuracy specifications
- Many models employ stainless steel stem for added durability

### How to order

#### How to order your dial indicator and accessories

1. Select the type of Indicator you require. Check the specialized types as well as regular ANSI/AGD models.
2. Choose the model best suited to the magnification, range and viewing needs of your job.
3. Accessories are important because they greatly increase the speed, efficiency and convenience of obtaining desired results. Mahr's wide selection of dial indicator accessories are shown in this catalog.
4. Our customers have many options; they are not restricted to the normally furnished equipment mentioned above. A wide choice of optionally available points, backs or dial arrangements can be specified at little or no extra cost. We maintain the most extensive stock of indicators and gages for dimensional measurement available anywhere. Items which are in stock are normally shipped within five working days. If you need them sooner, inquire when ordering. We can often make next-day deliveries.

Understandably, some of the items in this catalog are not always in stock or are special order items, which take a little longer to ship.

**If you need help** in determining what Indicators right for your application, just ask us. Contact Mahr:

**1-800-333-4243**

One of our experienced professionals will give you courteous, professional advice that can save you time and money.

#### Replacement indicators

Although Mahr dial indicators are known for their lifetime service, it is not uncommon to change an indicator back, contact point, dial or to even add an accessory to suit your latest application.

**When ordering a replacement dial indicator for a specific application, always verify the configuration of the indicator.**

**Ordering a replacement using the standard model number shown on your indicator may not provide you with the configuration or accessories you desire.**





## Dial Indicators per ANSI/AGD

### Selecting a dial indicator

Since modern manufacturing involves a wide range of tolerances, choosing a dial indicator might be difficult, especially since the number of indicators available is so vast. The following guidelines were prepared to assist you in selecting the right model for your application.

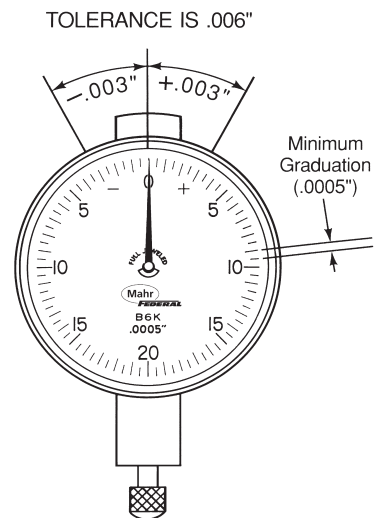
Consider four characteristics when selecting a dial indicator:

- **Minimum Graduation Value** — value of the smallest graduations marked on the dial. From several different values available from Mahr, select the one which is closest to 10% of the tolerance spread of the work you are measuring. This assures that the tolerance will span about ten divisions of the dial.
- **Size** — represents the bezel diameter. Make your selection on the basis of space available for the indicator and the distance from which it will be viewed. The Indicator photograph shown on the first page of each ANSI/AGD Group is full scale. Simply place the page which illustrates the Indicator at the expected viewing distance, and choose the size that offers you the best readability and is the proper size for your fixture. Mahr's "C" size bezels (ANSI/AGD Group 2), which have a diameter of 2-1/4", are the most popular.
- **Range per Revolution** — represents the distance the spindle travels with one complete revolution of the dial hand. From the dials available in the size and minimum graduation value you choose, select the range per revolution which allows the tolerance spread to occupy 1/10 to 1/4 of the dial.
- **Total Range** — the maximum distance over which the indicator spindle can travel. Usually, this represents 2-1/2 revolutions of the hand, which is adequate for most needs. Sometimes, however, this may not be adequate for your application and a special total range may be necessary.

Copies of the current ANSI Standard for Dial Indicators (ANSI B89.1.1 0-1987) are available from:

The American Society of Mechanical Engineers  
ASME Order Desk  
22 Law Drive  
Fairfield, NJ 07007  
(973)882-1167

*If your tolerance spread is .006" (±.003"), then, the most suitable minimum graduation value is .0005".*

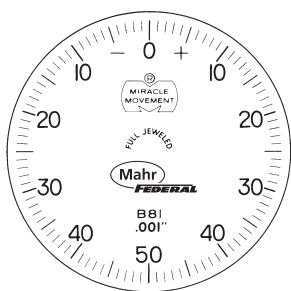


*Your tolerance spread is .006". You have chosen an ANSI/AGD Group 2 (Mahr "C" Size) dial with a minimum graduation value of .0005". Mahr offers four indicator types in this size and minimum graduation value. Of these, type C5M has a range per revolution of .030" which is about midway between your tolerance extremes.*

*You selected a C5M indicator. Your total range, however, needs to be at least .200" so the spindle can clear the lip of your part. But, the longest range available in the C5M indicator you need is only .075". Special ranges up to .400" are available for this indicator type. Select the closest range for your application (for Model C5M, you would select .250").*

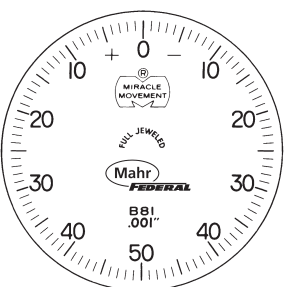
*If the range you need is not listed under the "Special Ranges" category, contact Mahr. Chances are we can supply the range you need.*

### Dial Types



- 1. Balanced (+) on right.**  
Normally furnished on all Group 0, 1, 3 and 4 ANSI/AGD indicators only, unless otherwise specified. Indicates an increasing value when contact is depressed as in comparison type OD, snap and bench thickness gages.

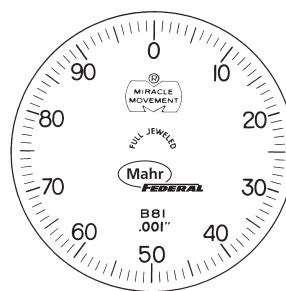
**Note:** If Revolution Counter models are ordered, counter dial numbered counterclockwise.



- 2. Balanced (+) on left.**  
Indicates decreasing values when contact is depressed as in comparison bore\* and depth gages.

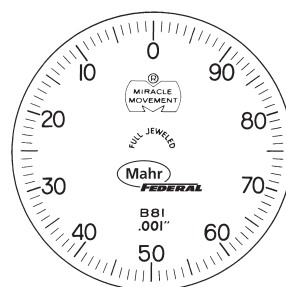
**Note:** With Revolution Counter models, counter dial numbered clockwise.

\* Will vary as dictated by motion transfer design.



- 3. Continuous clockwise.**  
Normally furnished on Long and Extra Long Range Indicators, unless otherwise specified. Indicates an increasing value when contact is depressed as in direct-reading thickness gages.

**Note:** With Revolution Counter models, counter dial numbered counterclockwise.



- 4. Continuous counterclockwise.**  
Indicates a decreasing value when contact is depressed as in direct reading slot, recess or hole depth measurements.

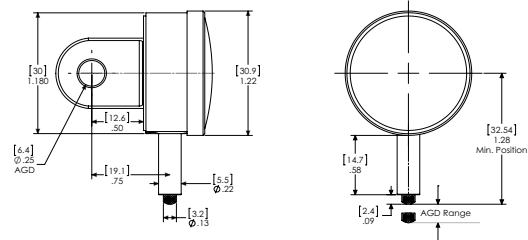
**Note:** If Revolution Counter models are ordered, counter dial numbered clockwise

# MarCator A1/2Q / A3Q / A6Q

## Dial Indicator

### FEATURES

- Unit construction and removable movement save repair/cleaning time and maintenance
- Hardened gears and stainless steel racks provide lasting protection against indicator failure due to shock or wear
- Jeweled bearings resist friction, add to longer indicator life
- Skeletonized, hobbled gears for more sensitive response, superior indicator accuracy with minimal hysteresis error
- Soft tinted dials (green - inch / yellow - metric) minimize eye strain
- Special steel alloy
- Balanced dial hand affords no shift, precise reading
- Controlled rack and pinion mesh eliminates slope for precise response and reading
- Smooth adjusting bezels for easy setup
- Positive pressure pullback spring requires less maintenance
- Compliance with ANSI/AGD dimensional and accuracy specifications
- Normally furnished: balanced dial with + on right; centered vertical lug back; regular contact point PT-43, .09" radiused, .093" long
- Optional dials: balanced with + on left; continuous clockwise; continuous counterclockwise
- Order by part number and specify dial style desired. For other dial styles or special requirements, call Mahr



### Application:

Where available space prohibits the use of longer dial indicators

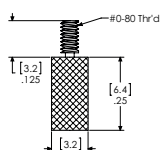
### TECHNICAL DATA

Order no.	Product type	Measuring span	Graduation value	Type of dial face	Range per rev.	Error limit	Standard	ANSI/AGD Group	Dial color
		inch	inch		inch	inch			
2011089	A1/2Q	.010"	.0001"	0-2-0	.004"	± .0001"	ANSI	0	Green
2011093	A3Q	.050"	.0005"	0-10-0	.020"	± .0005"	ANSI	0	Green
2011095	A6Q	.100"	.001"	0-20-0	.040"	± .001"	ANSI	0	Green

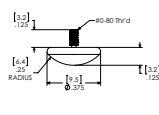
Order no.	Mounting shaft	Scale diameter
	inch	inch
2011089	.22"	1.25"
2011093	.22"	1.25"
2011095	.22"	1.25"

### ACCESSORIES

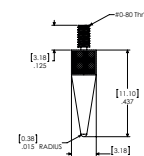
Order no.	Product name	Product type
2202329	Contact point, flat	AL-61
2204777	Flat back	BK-32
2204778	Lug back	BK-37
2204779	Post back 7/32"	BK-38
2204785	Adjustable back	BK-45
2204809	Screw type back 1/4-28	BK-88
2205082	Split bushing .218" x .374" x .5"	BU-112
2225757	Contact point, spherical	PT-118
2225758	Contact point, taper	PT-119
2225801	Contact point, spherical, A = 1/4"	PT-204
2225802	Contact point, spherical, A = 3/8"	PT-205
2225804	Contact point, spherical, A = 1/2"	PT-207
2225805	Contact point, spherical, A = 5/8"	PT-208
2225806	Contact point, spherical, A = 3/4"	PT-209
2225808	Contact point, spherical, A = 7/8"	PT-210
2225809	Contact point, spherical, A = 1"	PT-211
2225925	Contact point, spherical, A = 3/32" (normally furnished)	PT-43



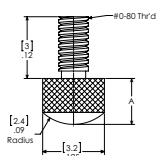
AL-61



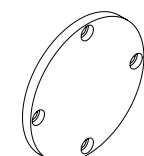
PT-118



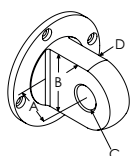
PT-119



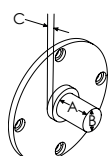
PT-43; PT-204;  
PT-205; PT-207;  
PT-208; PT-209;  
PT-210; PT-211



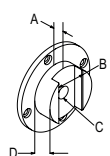
BK-32



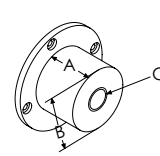
BK-37



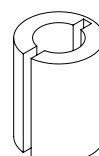
BK-38



BK-45



BK-88



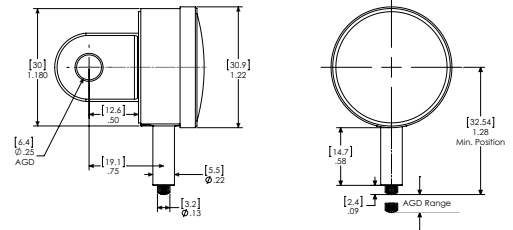
BU-112

# MarCator N1/2O / N3I / N6I

## Dial Indicator

### FEATURES

- Unit construction and removable movement save repair/cleaning time and maintenance
- Hardened gears and stainless steel racks provide lasting protection against indicator failure due to shock or wear
- Jeweled bearings resist friction, add to longer indicator life
- Skeletonized, hobbed gears for more sensitive response, superior indicator accuracy with minimal hysteresis error
- Soft tinted dials (green - inch / yellow - metric) minimize eye strain
- Special steel alloy
- Balanced dial hand affords no shift, precise reading
- Controlled rack and pinion mesh eliminates slope for precise response and reading
- Smooth adjusting bezels for easy setup
- Positive pressure pullback spring requires less maintenance
- Compliance with ANSI/AGD dimensional and accuracy specifications
- Normally furnished: balanced dial with + on right; centered vertical lug back; regular contact point PT-43, .09" radiused, .093" long
- Optional dials: balanced with + on left; continuous clockwise; continuous counterclockwise
- Order by part number and specify dial style desired. For other dial styles or special requirements, call Mahr



### Application:

Where available space prohibits the use of longer dial indicators

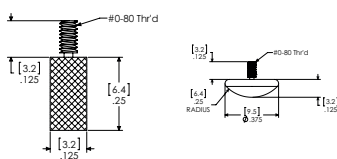
### TECHNICAL DATA

Order no.	Product type	Measuring span	Graduation value	Type of dial face	Range per rev.	Error limit	Standard	ANSI/AGD Group	Dial color
2011743	N1/2O	0.25 mm	0.002 mm	0-5-0	0.1 mm	± 0.002 mm	ANSI	0	Yellow
2011745	N3I	1.25 mm	0.005 mm	0-25-0	0.5 mm	± 0.005 mm	ANSI	0	Yellow
2011759	N6I	2.5 mm	0.01 mm	0-50-0	1 mm	± 0.01 mm	ANSI	0	Yellow

Order no.	Mounting shaft inches (text)	Scale diameter inches (text)
	inch	inch
2011743	.22"	1.22"
2011745	.22"	1.22"
2011759	.22"	1.22"

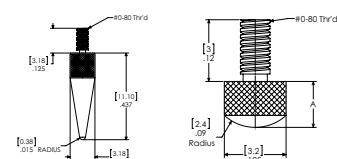
### ACCESSORIES

Order no.	Product name	Product type
2202329	Contact point, flat	AL-61
2204777	Flat back	BK-32
2204778	Lug back	BK-37
2204779	Post back 7/32"	BK-38
2204785	Adjustable back	BK-45
2204809	Screw type back 1/4-28	BK-88
2205082	Split bushing .218" x .374" x .5"	BU-112
2225757	Contact point, spherical	PT-118
2225758	Contact point, taper	PT-119
2225801	Contact point, spherical, A = 1/4"	PT-204
2225802	Contact point, spherical, A = 3/8"	PT-205
2225804	Contact point, spherical, A = 1/2"	PT-207
2225805	Contact point, spherical, A = 5/8"	PT-208
2225806	Contact point, spherical, A = 3/4"	PT-209
2225808	Contact point, spherical, A = 7/8"	PT-210
2225809	Contact point, spherical, A = 1"	PT-211
2225925	Contact point, spherical, A = 3/32" (normally furnished)	PT-43



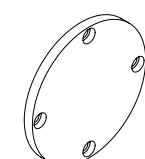
AL-61

PT-118

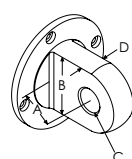


PT-119

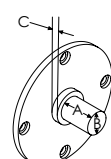
PT-43; PT-204; PT-205; PT-207; PT-208; PT-209; PT-210; PT-211



BK-32



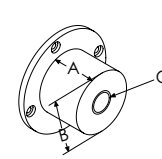
BK-37



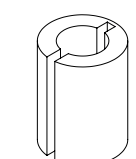
BK-38



BK-45



BK-88



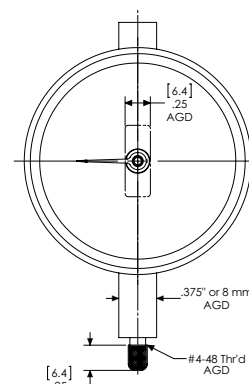
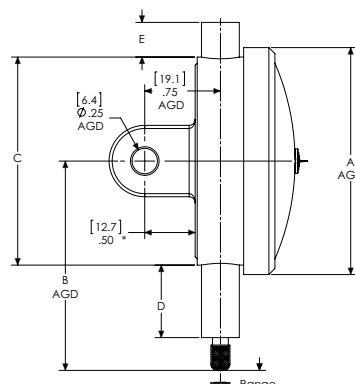
BU-112

# MarCator

## Dial Indicator

### FEATURES

- Unit construction and removable movement save repair/cleaning time and maintenance
- Hardened gears and stainless steel racks provide lasting protection against indicator failure due to shock or wear
- Jeweled bearings resist friction, add to longer indicator life
- Skeletonized, hobbed gears for more sensitive response, superior indicator accuracy with minimal hysteresis error
- Soft tinted dials (green - inch / yellow - metric) minimize eye strain
- Special steel alloy
- Balanced dial hand affords no shift, precise reading
- Controlled rack and pinion mesh eliminates slope for precise response and reading
- Smooth adjusting bezels for easy setup
- Positive pressure pull back spring requires less maintenance
- Compliance with ANSI/AGD dimensional and accuracy specifications
- These indicators are normally furnished with continuous dial (with R.C.) or + on right balance dial (w/o R.C.), lug back and .18" by .250" long contact
- Optional Dials: balanced dial with + on left; continuous clockwise; continuous counterclockwise (Order by part number and specify dial style desired)
- For other dial styles or special requirements - call Mahr



### TECHNICAL DATA

Order no.	Product type	Measur- ing span		Graduation value	Type of dial face	Rev. counter	Range per rev.		Error limit	Standard	ANSI/AGD Group	Dial color
		inch	inch				inch	inch				
2011000	12I	.025"	.0001"	0-5-0			.010"	±.0001"	ANSI	1	Green	
2011001	12I-RC	.025"	.0001"	0-10	•		.010"	±.0001"	ANSI	1	Green	
2011004	12Q	.025"	.00025"	0-5-0			.010"	±.00025"	ANSI	1	Green	
2011005	12Q-RC	.025"	.00025"	0-10	•		.010"	±.00025"	ANSI	1	Green	
2011106	B3K	.050"	.00025"	0-10-0			.020"	±.00025"	ANSI	1	Green	
2011107	B3K-RC	.050"	.00025"	0-20	•		.020"	±.00025"	ANSI	1	Green	
2011110	B3Q	.050"	.0005"	0-10-0			.020"	±.0005"	ANSI	1	Green	
2011111	B3Q-RC	.050"	.0005"	0-20	•		.020"	±.0005"	ANSI	1	Green	
2011118	B5M	.075"	.0005"	0-15-0			.030"	±.0005"	ANSI	1	Green	
2011119	B5M-RC	.075"	.0005"	0-30	•		.030"	±.0005"	ANSI	1	Green	
2011123	B6K	.100"	.0005"	0-20-0			.040"	±.0005"	ANSI	1	Green	
2011124	B6K-RC	.100"	.0005"	0-40	•		.040"	±.0005"	ANSI	1	Green	
2011133	B7I	.125"	.0005"	0-25-0			.050"	±.0005"	ANSI	1	Green	
2011134	B7I-RC	.125"	.0005"	0-50	•		.050"	±.0005"	ANSI	1	Green	
2011114	B3W	.050"	.001"	0-10-0			.020"	±.001"	ANSI	1	Green	
2011115	B3W-RC	.050"	.001"	0-20	•		.020"	±.001"	ANSI	1	Green	
2011128	B6Q	.100"	.001"	0-20-0			.040"	±.001"	ANSI	1	Green	
2011129	B6Q-RC	.100"	.001"	0-40	•		.040"	±.001"	ANSI	1	Green	
2011137	B7O	.125"	.001"	0-25-0			.050"	±.001"	ANSI	1	Green	
2011138	B7O-RC	.125"	.001"	0-50	•		.050"	±.001"	ANSI	1	Green	
2011141	B8I	.250"	.001"	0-50-0			.100"	±.001"	ANSI	1	Green	
2011142	B8I-RC	.250"	.001"	0-100	•		.100"	±.001"	ANSI	1	Green	



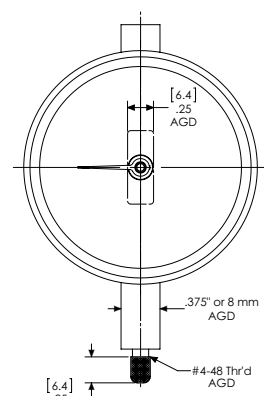
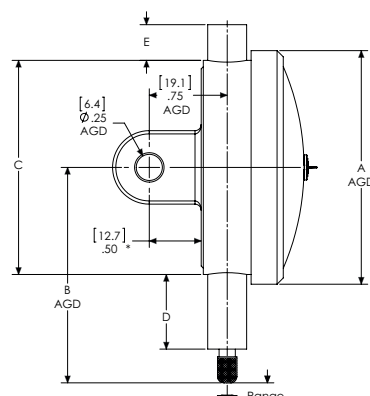
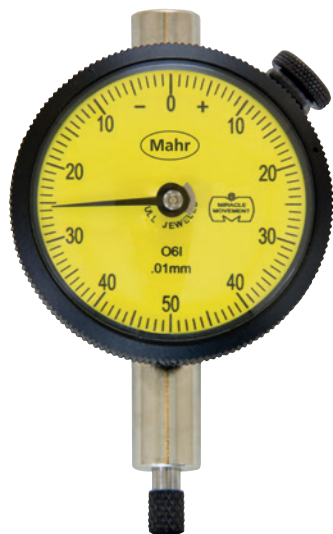


# MarCator O1I / O1I-RC / O3I / O3I-RC / O6I / O6I-RC / O8I / O8I-RC

## Dial Indicator

### FEATURES

- Unit construction and removable movement save repair/cleaning time and maintenance
- Hardened gears and stainless steel racks provide lasting protection against indicator failure due to shock or wear
- Jeweled bearings resist friction, add to longer indicator life
- Skeletonized, hobbed gears for more sensitive response, superior indicator accuracy with minimal hysteresis error
- Soft tinted dials (green - inch / yellow - metric) minimize eye strain
- Special steel alloy
- Balanced dial hand affords no shift, precise reading
- Controlled rack and pinion mesh eliminates slope for precise response and reading
- Smooth adjusting bezels for easy setup
- Positive pressure pull back spring requires less maintenance
- Compliance with ANSI/AGD dimensional and accuracy specifications
- These indicators are normally furnished with continuous dial (with R.C.) or + on right balance dial (w/o R.C.), lug back and .18" by .250" long contact
- Optional dials: balanced dial with + on left; continuous clockwise; continuous counterclockwise (Order by part number and specify dial style desired)
- For other dial styles or special requirements - call Mahr



### TECHNICAL DATA

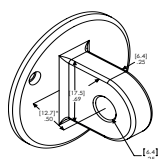
Order no.	Product type	Measuring span	Graduation value	Type of dial face	Rev. counter	Range per rev.	Error limit	Standard	ANSI/AGD Group	Dial color
		mm	mm			mm	mm			
2011765	O1I	0.5	0.002	0-10-0		0.2	± 0.004	ANSI	1	Yellow
2011767	O1I-RC	0.5	0.002	0-20	•	0.2	± 0.004	ANSI	1	Yellow
2011770	O3I	1.25	0.005	0-25-0		0.5	± 0.005	ANSI	1	Yellow
2011772	O3I-RC	1.25	0.005	0-50	•	0.5	± 0.005	ANSI	1	Yellow
2011775	O6I	2.5	0.01	0-50-0		1	± 0.010	ANSI	1	Yellow
2011776	O6I-RC	2.5	0.01	0-100	•	1	± 0.010	ANSI	1	Yellow
2011779	O8I	6.25	0.025	0-125-0		2.5	± 0.025	ANSI	1	Yellow
2011780	O8I-RC	6.25	0.025	0-250	•	2.5	± 0.025	ANSI	1	Yellow

## MarCator O1I / O1I-RC / O3I / O3I-RC / O6I / O6I-RC / O8I / O8I-RC

## Dial Indicator

Order no.	Scale diameter	Mounting shaft
	mm	inch
2011765	45	.375"
2011767	45	.375"
2011770	45	.375"
2011772	45	.375"
2011775	45	.375"
2011776	45	.375"
2011779	45	.375"
2011780	45	.375"

## ACCESSORIES



BK-1600

Order no.	Product name	Product type	ANSI/AGD Group
2201801	Adaptor for inductive probes for use on dial indicators (AGD)	AD-138	
2201846	Threaded bushing .625" long .500" OD with 5/16-32 internal thread	AD-62	
2201854	Split collet OD is 17.45 mm/.687"; requires 1/2-32 threaded hole	AD-87	
2203132	Mounting bracket with adjusting knob	AT-115	1
2203155	Mounting bracket with hex socket adjust	AT-27	1
2203163	Brake attachment, dust cap mount (option), range limited to 6.35 mm/.250" for group 1 and to 12 mm/.500" for group 2-4 indicators	AT-81	
2203183	Brake attachment (option)	AT-A-7-W1	1
2204603	Base for indicators with lug back	BA-1051	
2204756	Vertical lug back, centered, 1/4" hole	BK-1600	1
2204757	Vertical lug back, offset, 1/4" hole	BK-1601	1
2204758	Adjustable back 1/4"-20 thread	BK-1633	1
2204759	Post back 1/2"	BK-1634	1
2204760	Flat back	BK-1660	1
2204761	Screw type back 1/4-28	BK-1661	1
2204771	Horizontal lug back 1/4" hole	BK-19	1
2204811	Rack back used on AT-27 and AT-115	BK-92	1
2205081	Split bushing, for use with protective housing .375" stem hole X .687" OD	BU-111	
2205127	Split bushing with shoulder 8 mm stem hole X .375" OD	BU-197	
2205195	Split bushing, with counterbore, .375" stem hole x .500" OD	BU-80	
2205200	Split bushing without counterbore, .375" stem hole x .50" OD	BU-94	
2206230	Rane limiting caps, adjustable up to 9.52 mm/.375"	CS-123	
2219994	Rubber bellows for shank Ø .375"	GU-2	
2220156	Tolerance hands w/screw on bezel (option)	HD-59	1
2220539	OX-bow lifting lever	LR-40	
2220542	Lifting lever, left hand	LR-46	1
2220543	Lifting lever, right hand	LR-47	1
2235806	Tap 1/2 -32	V-892	

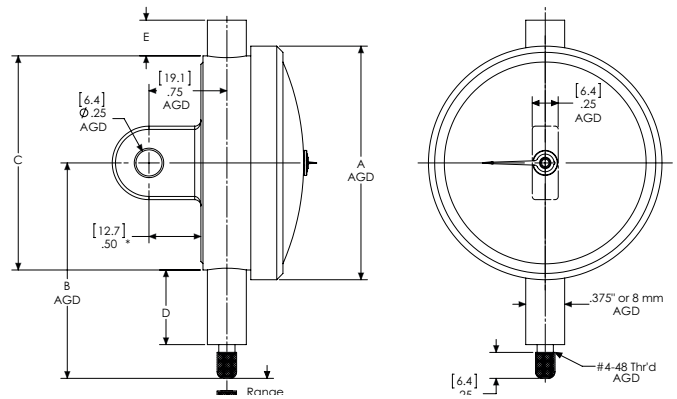
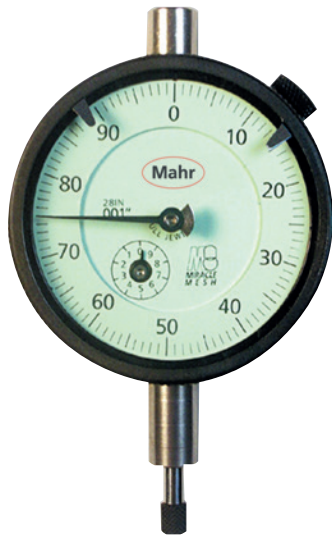


# MarCator

## Dial Indicator

### FEATURES

- Unit construction and removable movement save repair/cleaning time and maintenance
- Hardened gears and stainless steel racks provide lasting protection against indicator failure due to shock or wear
- Jeweled bearings resist friction, add to longer indicator life
- Skeletonized, hobbed gears for more sensitive response, superior indicator accuracy with minimal hysteresis error
- Soft tinted dials (green - inch / yellow - metric) minimize eye strain
- Special steel alloy
- Balanced dial hand affords no shift, precise reading
- Controlled rack and pinion mesh eliminates slope for precise response and reading
- Smooth adjusting bezels for easy setup
- Positive pressure pull back spring requires less maintenance
- Compliance with ANSI/AGD dimensional and accuracy specifications
- These indicators are normally furnished with continuous dial (with R.C.) or + on right balance dial (w/o R.C.), lug back and .18" by .250" long contact
- Optional dials: balanced dial with + on left; continuous clockwise; continuous counterclockwise. (Order by part number and specify dial style desired)
- For other dial styles or special requirements - call Mahr

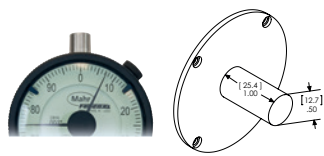


### TECHNICAL DATA

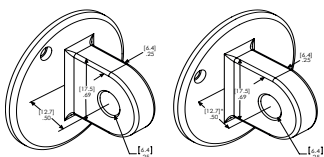
Order no.	Product type	Measu-	Graduation	Type of dial face	Rev. counter	Range	Error limit	Standard	ANSI/AGD Group	Dial color
		ring span	value			per rev.				
2011157	C1/2K	.010"	.00005"	0-2-0		.004"	±.0001"	ANSI	2	Green
2011158	C1/2K-RC	.010"	.00005"	0-4	•	.004"	±.0001"	ANSI	2	Green
2011161	C1K	.020"	.0001"	0-4-0		.008"	±.0001"	ANSI	2	Green
2011162	C1K-RC	.020"	.0001"	0-8	•	.008"	±.0001"	ANSI	2	Green
2015781	22I	.025"	.0001"	0-5-0		.010"	±.0001"	ANSI	2	Green
2014761	22IN-RC	.025"	.0001"	0-10	•	.010"	±.0001"	ANSI	2	Green
2015782	22QN	.025"	.00025"	0-5-0		.010"	±.00025"	ANSI	2	Green
2014791	22QN-RC	.025"	.00025"	0-10	•	.010"	±.00025"	ANSI	2	Green
2015783	23K	.050"	.00025"	0-10-0		.020"	±.00025"	ANSI	2	Green
2014808	23K-RC	.050"	.00025"	0-20	•	.020"	±.00025"	ANSI	2	Green
2015784	23Q	.050"	.0005"	0-10-0		.020"	±.0005"	ANSI	2	Green
2014810	23Q-RC	.050"	.0005"	0-20	•	.020"	±.0005"	ANSI	2	Green
2015786	25M	.075"	.0005"	0-15-0		.030"	±.0005"	ANSI	2	Green
2014811	25M-RC	.075"	.0005"	0-30	•	.030"	±.0005"	ANSI	2	Green
2015787	26K	.100"	.0005"	0-20-0		.040"	±.0005"	ANSI	2	Green
2014812	26K-RC	.100"	.0005"	0-40	•	.040"	±.0005"	ANSI	2	Green
2015790	27I	.125"	.0005"	0-25-0		.050"	±.0005"	ANSI	2	Green
2014814	27I-RC	.125"	.0005"	0-50	•	.050"	±.0005"	ANSI	2	Green
2015785	23W	.050"	.001"	0-10-0		.020"	±.001"	ANSI	2	Green
2014809	23W-RC	.050"	.001"	0-20	•	.020"	±.001"	ANSI	2	Green
2015789	26Q	.100"	.001"	0-20-0		.040"	±.001"	ANSI	2	Green
2014813	26Q-RC	.100"	.001"	0-40	•	.040"	±.001"	ANSI	2	Green
2015791	27O	.125"	.001"	0-25-0		.050"	±.001"	ANSI	2	Green
2014815	27O-RC	.125"	.001"	0-50	•	.050"	±.001"	ANSI	2	Green
2015792	28IN	.250"	.001"	0-50-0		.100"	±.001"	ANSI	2	Green
2011049	28IN-RC	.250"	.001"	0-100	•	.100"	±.001"	ANSI	2	Green

# MarCator

## Dial Indicator

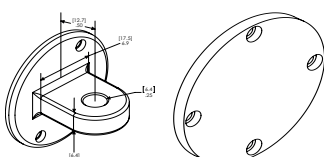


BK-2093



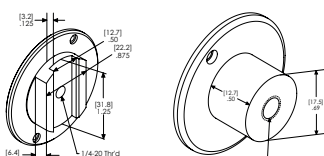
BK-2168

BK-383



BK-400

BK-470



BK-531

BK-692



HD-57

HG-100

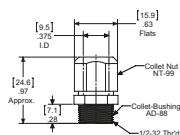


LR-46; LR-48

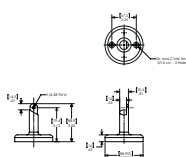
AD-138



BU-80



AD-87



BA-1051

Order no.	Scale diameter	Mounting shaft	Order no.	Scale diameter	Mounting shaft
	inch	inch		inch	inch
2011157	2.25"	.375"	2014811	2.25"	.375"
2011158	2.25"	.375"	2015787	2.25"	.375"
2011161	2.25"	.375"	2014812	2.25"	.375"
2011162	2.25"	.375"	2015790	2.25"	.375"
2015781	2.25"	.375"	2014814	2.25"	.375"
2014761	2.25"	.375"	2015785	2.25"	.375"
2015782	2.25"	.375"	2014809	2.25"	.375"
2014791	2.25"	.375"	2015789	2.25"	.375"
2015783	2.25"	.375"	2014813	2.25"	.375"
2014808	2.25"	.375"	2015791	2.25"	.375"
2015784	2.25"	.375"	2014815	2.25"	.375"
2014810	2.25"	.375"	2015792	2.25"	.375"
2015786	2.25"	.375"	2011049	2.25"	.375"

### ACCESSORIES

Order no.	Product name	Product type	ANSI/AGD Group
2014804	Magnetic maximum hand w/snap on bezel (option)		2
2201801	Adaptor for inductive probes for use on dial indicators (AGD)	AD-138	
2201843	Adaptor Bushing 0.275" ID to 0.375" OD	AD-58	
2201846	Threaded bushing .625" long .500" OD with 5/16-32 internal thread	AD-62	
2201854	Split collet OD is 17.45 mm/ .687"; requires 1/2-32 threaded hole	AD-87	
2203133	Mounting bracket with adjusting knob for AGD 2	AT-116	2
2203163	Brake attachment, dust cap mount (option), range limited to 6.35 mm/ .250" for group 1 and to 12 mm/ .500" for group 2-4 indicators	AT-81	
2203184	Brake attachment (option)	AT-A-7-W2	2
2204603	Base for indicators with lug back	BA-1051	
2204772	Post back 1/2" Dia.	BK-2093	2
2204773	Vertical lug, offset 1/4" hole	BK-2168	2
2204780	Vertical lug back, centered 1/4" hole	BK-383	2
2204782	Horizontal lug back, centered, 1/4" hole	BK-400	2
2204786	Flat back for AGD 2	BK-470	2
2204790	Adjustable back 1/4-20 thread	BK-531	2
2204802	Screw type back 1/4-28	BK-692	2
2204812	Rack back used on AT-116 and AT-28	BK-93	2
2205081	Split bushing, for use with protective housing .375" stem hole X .687" OD	BU-111	
2205195	Split bushing, with counterbore, .375" stem hole x .500" OD	BU-80	
2205200	Split bushing without counterbore, .375" stem hole x .50" OD	BU-94	
2205222	Tolerance hands w/snap on bezel (option)	BZ-2503	2
2206230	Rane limiting caps, adjustable up to 9.52 mm / .375"	CS-123	
2219994	Rubber bellows for shank Ø .375"	GU-2	
2220154	Tolerance hands w/screw on bezel (option)	HD-57	2
2220177	Protective housing for AGD 2 models with rangers up to 6.35 mm/ .250"	HG-100	2
2220178	Protective housing for AGD 2 models with rangers up to 25 mm/ 1"	HG-101	2
2220539	OX-bow lifting lever	LR-40	
2220544	Lifting lever to lift probe manually (left)	LR-48	2
2220545	Lifting lever to lift probe manually (right)	LR-49	2
2235806	Tap 1/2 -32	V-892	

# MarCator P1/2I / P1/2I-RC / P1I / P1I-RC / 23I / 23IM-RC / 26I / 26IM-RC / 28IM / 28IM-RC

## Dial Indicator

### FEATURES

- Unit construction and removable movement save repair/cleaning time and maintenance
- Hardened gears and stainless steel racks provide lasting protection against indicator failure due to shock or wear
- Jeweled bearings resist friction, add to longer indicator life
- Skeletonized, hobbed gears for more sensitive response, superior indicator accuracy with minimal hysteresis error
- Soft tinted dials (green - inch / yellow - metric) minimize eye strain
- Special steel alloy
- Balanced dial hand affords no shift, precise reading
- Controlled rack and pinion mesh eliminates slope for precise response and reading
- Smooth adjusting bezels for easy setup
- Positive pressure pullback spring requires less maintenance
- Compliance with ANSI/AGD dimensional and accuracy specifications
- These indicators are normally furnished with continuous dial (with R.C.) or + on right balance dial (w/o R.C.), lug back and .18" by .250" long contact
- Optional Dials: balanced dial with + on left; continuous clockwise; continuous counterclockwise. (Order by part number and specify dial style desired)
- For other dial styles or special requirements - call Mahr



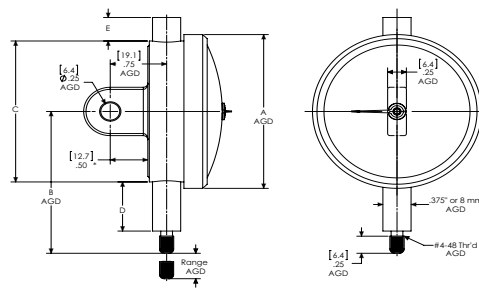
### TECHNICAL DATA

Order no.	Product type	Measuring span	Graduation value	Type of dial face	Rev. counter	Range per rev.	Error limit	Standard	ANSI/AGD Group	Dial color
		mm	mm			mm	mm			
2011810	P1/2I	0.25	0.001	0-5-0		0.1	± 0.002	ANSI	2	Yellow
2011812	P1/2I-RC	0.25	0.001	0-10	•	0.1	± 0.002	ANSI	2	Yellow
2011815	P1I	0.5	0.002	0-10-0		0.2	± 0.004	ANSI	2	Yellow
2011817	P1I-RC	0.5	0.002	0-20	•	0.2	± 0.004	ANSI	2	Yellow
2015793	23I	1.25	0.005	0-25-0		0.5	± 0.005	ANSI	2	Yellow
2014817	23IM-RC	1.25	0.005	0-50	•	0.5	± 0.005	ANSI	2	Yellow
2015794	26I	2.5	0.01	0-50-0		1	± 0.010	ANSI	2	Yellow
2014818	26IM-RC	2.5	0.01	0-100	•	1	± 0.010	ANSI	2	Yellow
2015795	28IM	5	0.02	0-100-0		2	± 0.020	ANSI	2	Yellow
2014819	28IM-RC	5	0.02	0-200	•	2	± 0.020	ANSI	2	Yellow

MarCator P1/2I / P1/2I-RC / P1I / P1I-RC / 23I / 23IM-RC / 26I / 26IM-RC / 28IM / 28IM-RC

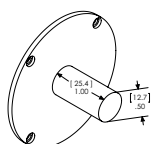
Dial Indicator

Order no.	Scale diameter	Mounting shaft
	mm	inch
2011810	57	.375"
2011812	57	.375"
2011815	57	.375"
2011817	57	.375"
2015793	57	.375"
2014817	57	.375"
2015794	57	.375"
2014818	57	.375"
2015795	57	.375"
2014819	57	.375"

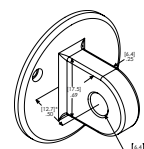
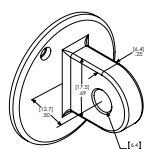


ACCESSORIES

Order no.	Product name	Product type	ANSI/AGD Group
2014804	Magnetic maximum hand w/snap on bezel (option)		2
2201801	Adaptor for inductive probes for use on dial indicators (AGD)	AD-138	
2201846	Threaded bushing .625" long .500" OD with 5/16-32 internal thread	AD-62	
2201854	Split collet OD is 17.45 mm/ .687"; requires 1/2-32 threaded hole	AD-87	
2203133	Mounting bracket with adjusting knob for AGD 2	AT-116	2
2203156	Mounting bracket with hex socket adjustable	AT-28	2
2203163	Brake attachment, dust cap mount (option), range limited to 6.35 mm/ .250" for group 1 and to 12 mm/ .500" for group 2-4 indicators	AT-81	
2203184	Brake attachment (option)	AT-A-7-W2	2
2204603	Base for indicators with lug back	BA-1051	
2204772	Post back 1/2" Dia.	BK-2093	2
2204773	Vertical lug, offset 1/4" hole	BK-2168	2
2204780	Vertical lug back, centered 1/4" hole	BK-383	2
2204782	Horizontal lug back, centered, 1/4" hole	BK-400	2
2204786	Flat back for AGD 2	BK-470	2
2204790	Adjustable back 1/4-20 thread	BK-531	2
2204802	Screw type back 1/4-28	BK-692	2
2204812	Rack back used on AT-116 and AT-28	BK-93	2
2205081	Split bushing, for use with protective housing .375" stem hole X .687" OD	BU-111	
2205195	Split bushing, with counterbore, .375" stem hole x .500" OD	BU-80	
2205200	Split bushing without counterbore, .375" stem hole x .50" OD	BU-94	
2205222	Tolerance hands w/snap on bezel (option)	BZ-2503	2
2206230	Rane limiting caps, adjustable up to 9.52 mm / .375"	CS-123	
2219994	Rubber bellows for shank Ø .375"	GU-2	
2220154	Tolerance hands w/screw on bezel (option)	HD-57	2
2220177	Protective housing for AGD 2 models with rangers up to 6.35 mm/ .250"	HG-100	2
2220178	Protective housing for AGD 2 models with rangers up to 25 mm/ 1"	HG-101	2
2220539	OX-bow lifting lever	LR-40	
2220544	Lifting lever to lift probe manually (left)	LR-48	2
2220545	Lifting lever to lift probe manually (right)	LR-49	2
2235806	Tap 1/2 -32	V-892	

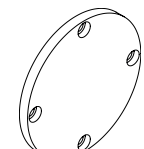
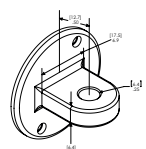


BK-2093;  
BK-664; BK-17



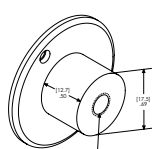
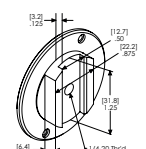
BK-1601;  
BK-2168;  
BK-545; BK-4

BK-1600;  
BK-383;  
BK-431; BK-3



BK-19;  
BK-400;  
BK-109

BK-32;  
BK-470;  
BK-473; BK-5



BK-531;  
BK-10; BK-18

BK-1661;  
BK-692;  
BK-177; BK-16



HD-57; HD-53

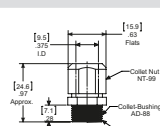
HG-100



LR-46; LR-48;  
LR-50; LR-68



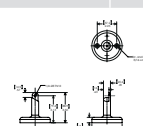
AD-138



AD-87



BU-80



BA-1051

# MarCator

## Dial Indicator

### FEATURES

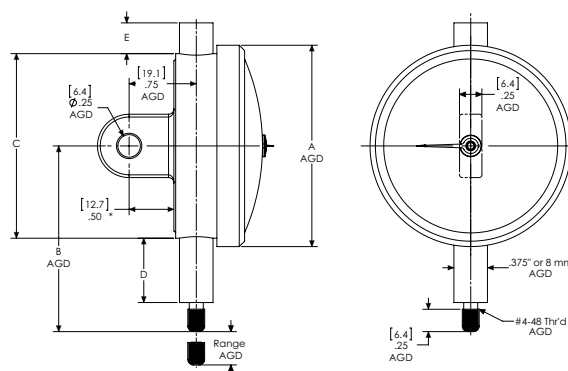
- Outstanding quality due to a well thought out design, use of high quality materials, and the precision engineered mechanism's guarantee
- The concentric "Speed Read" pointer (on 1.0" and .500" models) allows easy and safe reading of this dial indicator
- Spindle and stem are made of resistant stainless steel
- Supplied with: lug back and tolerance hands



### TECHNICAL DATA

Order no.	Measuring span	Graduation value	Type of dial face	Rev. counter	Range per rev.	Error limit	Standard	ANSI/AGD Group	Dial color
2016005	.250"	.001"	0-100	•	.100"	±.001"	ANSI	2	Green
2016004	.500"	.001"	0-100	•	.100"	±.001"	ANSI	2	Green
2016002	1.000"	.001"	0-100	•	.100"	±.001"	ANSI	2	Green

Order no.	Mounting shaft	Scale diameter
2016005	.375"	2.25"
2016004	.375"	2.25"
2016002	.375"	2.25"



### ACCESSORIES

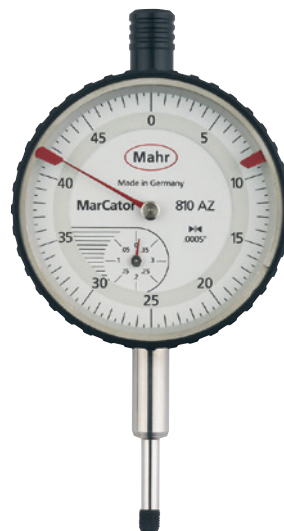
Order no.	Product name
2016007	Lug back
2016008	Screw back
2016009	Post back
2016010	Adjustable back
2247145	Flat back

# MarCator 810 AZ / 803 AZ

## Dial Indicator

### FEATURES

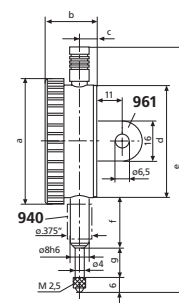
- High contrast dial face
- Adjustable tolerance markers
- Chrome plated housing
- Lifter protection cap on the measuring spindle
- Precision gears and pinions
- **Package contains:** adapter bush 940, 8 mm to 3/8", case



### TECHNICAL DATA

Order no.		4311900	4324900
Product type		810 AZ	803 AZ
Measuring span	inch	.400"	.120"
Graduation value	inch		.0005"
Type of dial face		0-50	0-20
Range per rev.	inch	.05"	.02"
Error limit	inch	.0005"	.0004"
Error limit, 1/10 revolution inches (text)	inch		.0002"
Repeatability $f_w$	inch		.00012"
Hysteresis $f_u$	inch		.00012"
Free stroke inches (text)	inch	.004"	.008"
Measuring force incoming measuring pin		0.9-1.5	0.7-1.1
Standard		Factory standard	
Lifting protection cap		•	
Dial color		White	

Order no.	a	b	c	d	e	f	g	Mounting shaft	Mounting shaft	Scale diameter
	mm	mm	mm	mm	mm	mm	mm	mm	inch	inch
4311900	58	23	7.5	52	111.5	22	15	8	.375"	1.97"
4324900	40	20.6	6.8	37	83	15.5	8	8	.375"	1.4"



### ACCESSORIES

Order no.	Product name	Product type
4310103	Adapter bush (.375" / 8 mm)	940
4373020	Splash proof cap (58 mm)	955
4375010	Lug back, vertical, for 810	961
4375011	Lug back, horizontal, for 810	962
4375020	Lug back, vertical, for 803	966
4375021	Lug back, horizontal, for 803	967

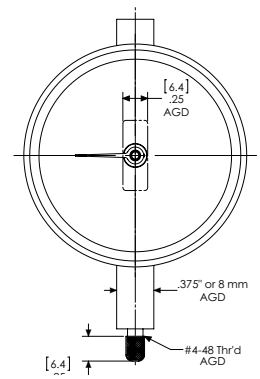
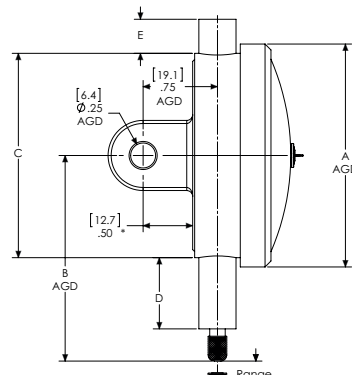


# MarCator

## Dial Indicator

### FEATURES

- Unit construction and removable movement save repair/cleaning time and maintenance
- Hardened gears and stainless steel racks provide lasting protection against indicator failure due to shock or wear
- Jeweled bearings resist friction, add to longer indicator life
- Skeletonized, hobbled gears for more sensitive response, superior indicator accuracy with minimal hysteresis error
- Soft tinted dials (green - inch / yellow - metric) minimize eye strain
- Special steel alloy
- Balanced dial hand affords no shift, precise reading
- Controlled rack and pinion mesh eliminates slope for precise response and reading
- Smooth adjusting bezels for easy setup
- Positive pressure pull back spring requires less maintenance
- Compliance with ANSI/AGD dimensional and accuracy specifications
- These indicators are normally furnished with continuous dial (with R.C.) or + on right balance dial (w/o R.C.), lug back and .18" by .250" long contact
- Optional Dials: balanced dial with + on left; continuous clockwise; continuous counterclockwise. (Order by part number and specify dial style desired)
- For other dial styles or special requirements - call Mahr



### TECHNICAL DATA

Order no.	Product type	Measu-	Graduation	Type of dial face	Rev. counter	Range	Error limit	Standard	ANSI/AGD Group	Dial color
		ring span	value			per rev.	inch			
2011226	D1K	.020"	.0001"	0-4-0		.008"	±.0001"	ANSI	3	Green
2011227	D1K-RC	.020"	.0001"	0-8	•	.008"	±.0001"	ANSI	3	Green
2011050	32I	.025"	.0001"	0-5-0		.010"	±.0001"	ANSI	3	Green
2011051	32I-RC	.025"	.0001"	0-10	•	.010"	±.0001"	ANSI	3	Green
2011054	32Q	.025"	.00025"	0-5-0		.010"	±.00025"	ANSI	3	Green
2011055	32Q-RC	.025"	.00025"	0-10	•	.010"	±.00025"	ANSI	3	Green
2011230	D3K	.050"	.00025"	0-10-0		.020"	±.00025"	ANSI	3	Green
2011231	D3K-RC	.050"	.00025"	0-20	•	.020"	±.00025"	ANSI	3	Green
2011242	D5G	.075"	.00025"	0-15-0		.030"	±.00025"	ANSI	3	Green
2011243	D5G-RC	.075"	.00025"	0-30	•	.030"	±.00025"	ANSI	3	Green
2011234	D3Q	.050"	.0005"	0-10-0		.020"	±.0005"	ANSI	3	Green
2011235	D3Q-RC	.050"	.0005"	0-20	•	.020"	±.0005"	ANSI	3	Green
2011246	D5M	.075"	.0005"	0-15-0		.030"	±.0005"	ANSI	3	Green
2011247	D5M-RC	.075"	.0005"	0-30	•	.030"	±.0005"	ANSI	3	Green
2011250	D6K	.100"	.0005"	0-20-0		.040"	±.0005"	ANSI	3	Green
2011251	D6K-RC	.100"	.0005"	0-40	•	.040"	±.0005"	ANSI	3	Green
2011258	D7I	.125"	.0005"	0-25-0		.050"	±.0005"	ANSI	3	Green
2011259	D7I-RC	.125"	.0005"	0-50	•	.050"	±.0005"	ANSI	3	Green
2011238	D3W	.050"	.001"	0-10-0		.020"	±.001"	ANSI	3	Green
2011239	D3W-RC	.050"	.001"	0-20	•	.020"	±.001"	ANSI	3	Green
2011254	D6Q	.100"	.001"	0-20-0		.040"	±.001"	ANSI	3	Green
2011255	D6Q-RC	.100"	.001"	0-40	•	.040"	±.001"	ANSI	3	Green
2011262	D7O	.125"	.001"	0-25-0		.050"	±.001"	ANSI	3	Green
2011263	D7O-RC	.125"	.001"	0-50	•	.050"	±.001"	ANSI	3	Green
2011266	D8I	.250"	.001"	0-50-0		.100"	±.001"	ANSI	3	Green
2011267	D8I-RC	.250"	.001"	0-100	•	.100"	±.001"	ANSI	3	Green



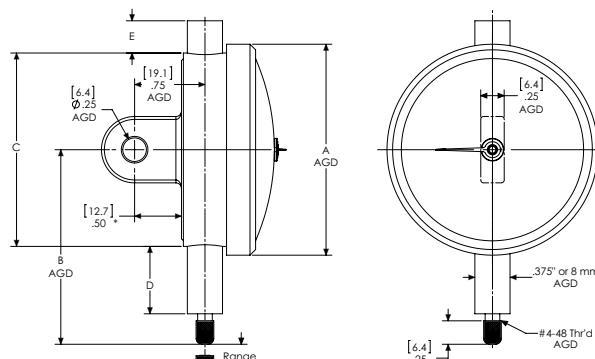
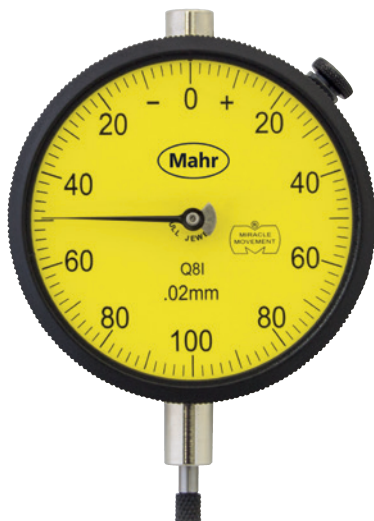


# MarCator Q1I / Q1I-RC / Q3I / Q3I-RC / Q6I / Q6I-RC / Q8I / Q8I-RC

## Dial Indicator

### FEATURES

- Unit construction and removable movement save repair/cleaning time and maintenance
- Hardened gears and stainless steel racks provide lasting protection against indicator failure due to shock or wear
- Jeweled bearings resist friction, add to longer indicator life
- Skeletonized, hobbed gears for more sensitive response, superior indicator accuracy with minimal hysteresis error
- Soft tinted dials (green - inch / yellow - metric) minimize eye strain
- Special steel alloy
- Balanced dial hand affords no shift, precise reading
- Controlled rack and pinion mesh eliminates slope for precise response and reading
- Smooth adjusting bezels for easy setup
- Positive pressure pull back spring requires less maintenance
- Compliance with ANSI/AGD dimensional and accuracy specifications
- These indicators are normally furnished with continuous dial (with R.C.) or + on right balance dial (w/o R.C.), lug back and .18" by .250" long contact
- Optional dials: balanced dial with + on left; continuous clockwise; continuous counterclockwise. (Order by part number and specify dial style desired)
- For other dial styles or special requirements - call Mahr



### TECHNICAL DATA

Order no.	Product type	Measuring span	Graduation value	Type of dial face	Rev. counter	Range per rev.	Error limit	Standard	ANSI/AGD Group	Dial color
		mm	mm			mm	mm			
2011867	Q1I	0.5	0.002	0-10-0		0.2	± 0.004	ANSI	3	Yellow
2011868	Q1I-RC	0.5	0.002	0-20	•	0.2	± 0.004	ANSI	3	Yellow
2011871	Q3I	1.25	0.005	0-25-0		0.5	± 0.005	ANSI	3	Yellow
2011872	Q3I-RC	1.25	0.005	0-50	•	0.5	± 0.005	ANSI	3	Yellow
2011875	Q6I	2.5	0.01	0-50-0		1	± 0.010	ANSI	3	Yellow
2011876	Q6I-RC	2.5	0.01	0-100	•	1	± 0.010	ANSI	3	Yellow
2011879	Q8I	5	0.02	0-100-0		2	± 0.020	ANSI	3	Yellow
2011880	Q8I-RC	5	0.02	0-200	•	2	± 0.020	ANSI	3	Yellow

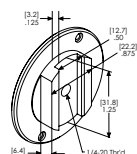
# MarCator Q1I / Q1I-RC / Q3I / Q3I-RC / Q6I / Q6I-RC / Q8I / Q8I-RC

## Dial Indicator

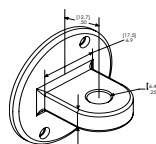
Order no.	Scale diameter	Mounting shaft
	mm	inch
2011867	70	.375"
2011868	70	.375"
2011871	70	.375"
2011872	70	.375"
2011875	70	.375"
2011876	70	.375"
2011879	70	.375"
2011880	70	.375"

### ACCESSORIES

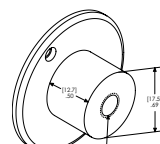
Order no.	Product name	Product type	ANSI/AGD Group
2011341	Magnetic maximum hand (option)		3
2201801	Adaptor for inductive probes for use on dial indicators (AGD)	AD-138	
2201846	Threaded bushing .625" long .500" OD with 5/16-32 internal thread	AD-62	
2201854	Split collet OD is 17.45 mm/ .687"; requires 1/2-32 threaded hole	AD-87	
2203163	Brake attachment, dust cap mount (option), range limited to 6.35 mm/ .250" for group 1 and to 12 mm/ .500" for group 2-4 indicators	AT-81	
2203185	Brake attachment (option)	AT-A-7-W3	3
2204603	Base for indicators with lug back	BA-1051	
2204730	Adjustable back with 1/4-20 thread	BK-10	3
2204734	Horizontal lug back, centered	BK-109	3
2204763	Screw type back 1/4-28	BK-177	3
2204784	Vertical lug back, centered	BK-431	3
2204787	Flat back	BK-473	3
2204791	Vertical lug back, offset	BK-545	3
2204799	Post back 1/2" dia.	BK-664	3
2205081	Split bushing, for use with protective housing .375" stem hole X .687" OD	BU-111	
2205127	Split bushing with shoulder 8 mm stem hole X .375" OD	BU-197	
2205195	Split bushing, with counterbore, .375" stem hole x .500" OD	BU-80	
2205200	Split bushing without counterbore, .375" stem hole x .50" OD	BU-94	
2206230	Rane limiting caps, adjustable up to 9.52 mm / .375"	CS-123	
2219994	Rubber bellows for shank Ø .375"	GU-2	
2220539	OX-bow lifting lever	LR-40	
2220546	Lifting lever to lift probe manually (left)	LR-50	3
2220547	Lifting lever to lift probe manually (right)	LR-51	3
2235806	Tap 1/2 -32	V-892	



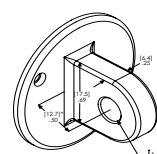
BK-10



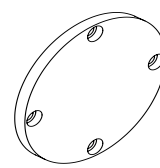
BK-109



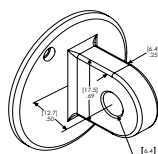
BK-177



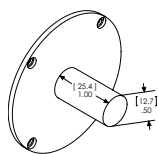
BK-431



BK-473



BK-545



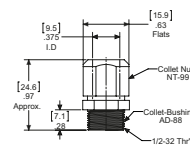
BK-664



LR-50; LR-68



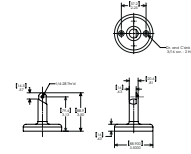
AD-138



AD-87



BU-80



BA-1051

# MarCator 42IQ / 28IQN / 28ISN / D8IS / 29I / D8IT / E8IU

## Dial Indicator

### FEATURES

- Unit construction and removable movement save repair/cleaning time and maintenance
- Hardened gears and stainless steel racks provide lasting protection against indicator failure due to shock or wear
- Jeweled bearings resist friction, add to longer indicator life
- Skeletonized, hobbled gears for more sensitive response, superior indicator accuracy with minimal hysteresis error
- Soft tinted dials (green - inch / yellow - metric) minimize eye strain
- Special steel alloy
- Balanced dial hand affords no shift, precise reading
- Controlled rack and pinion mesh eliminates slope for precise response and reading
- Smooth adjusting bezels for easy setup
- Positive pressure pullback spring requires less maintenance
- Normally furnished: continuous clockwise dial; centered vertical lug back; regular contact point, .18" radiused, .250" long
- Long Range Models: include (1) revolution counter (except C9I without revolution counter). Extra Long Range Models: include (2) revolution counters
- For other dial styles or special requirements - call Mahr



### TECHNICAL DATA

Order no.	Type	Measuring span inch	Scale graduation value	Type of dial face	Rev. counter	Range per rev. in inches (text)	Error limit inches (text)	Standard	ANSI/AGD Group	Dial color
		inch	inch			inch	inch			
2014699	28IQN	.500"	.001"	0-100	•	.100"	± .001"	ANSI	2	Green
2014698	28ISN	1.000"	.001"	0-100	•	.100"	± .001"	ANSI	2	Green
2011270	D8IS	1.000"	.001"	0-100	•	.100"	± .001"	ANSI	3	Green
2014816	29I	1.000"	.01"	0-1000		1.000"	± .010"	ANSI	2	Green
2011272	D8IT	2.000"	.001"	0-100	•	.100"	± .001" for first 1" of travel	ANSI	3	Green

Order no.	Mounting shaft inches (text)	Scale diameter inches (text)
	inch	inch
2014699	.375"	2.25"
2014698	.375"	2.25"
2011270	.375"	2.75"
2014816	.375"	2.25"
2011272	.375"	2.75"

# MarCator SP6IS / SQ6IS / Q8IT / R8IU

## Dial Indicator

### FEATURES

- Unit construction and removable movement save repair/cleaning time and maintenance
- Hardened gears and stainless steel racks provide lasting protection against indicator failure due to shock or wear
- Jeweled bearings resist friction, add to longer indicator life
- Skeletonized, hobbed gears for more sensitive response, superior indicator accuracy with minimal hysteresis error
- Soft tinted dials (green - inch / yellow - metric) minimize eye strain
- Special steel alloy
- Balanced dial hand affords no shift, precise reading
- Controlled rack and pinion mesh eliminates slope for precise response and reading
- Smooth adjusting bezels for easy setup
- Positive pressure pullback spring requires less maintenance
- Normally furnished: continuous clockwise dial; centered vertical lug back; regular contact point, .18" radiused, .250" long
- Long Range Models: include (1) revolution counter (except C9I without revolution counter). Extra Long Range Models: include (2) revolution counters
- For other dial styles or special requirements - call Mahr



### TECHNICAL DATA

Order no.	Type	Measuring span	Readings	Type of dial face	Rev. counter	Range per rev.	Error limit in mm (text)	Standard	ANSI/AGD Group	Dial color
		mm	mm			mm	mm			
2012381	SP6IS	25	0.01	0-100	•	1	± 0.02	ANSI	2	Yellow
2012384	SQ6IS	25	0.01	0-100	•	1	± 0.02	ANSI	3	Yellow
2011883	Q8IT	50	0.025	0-25	•	2.5	± 0.025 for first 25 mm of travel	ANSI	3	Yellow

Order no.	Mounting shaft inches (text)	Scale diameter
	inch	mm
2012381	.375"	57
2012384	.375"	70
2011883	.375"	70